

STAY THE NIGHT, IN THE LIGHT!

The Captain Sinclair Suite, located upstairs, is the most romantic.

It features a huge built in king size bed, an oversized Jacuzzi tub, a steam shower with dual shower heads, granite counter tops, wet bar, nautical style dinette and spiral stairs that lead you up to the light overlook providing panoramic views of the Pagan River and surrounding marshlands.



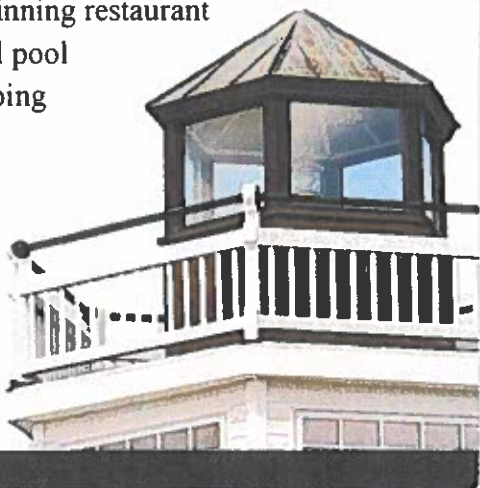
Downstairs is the Captain Todd Executive Suite. This suite features a panoramic view of the river and marina with windows all the way around the



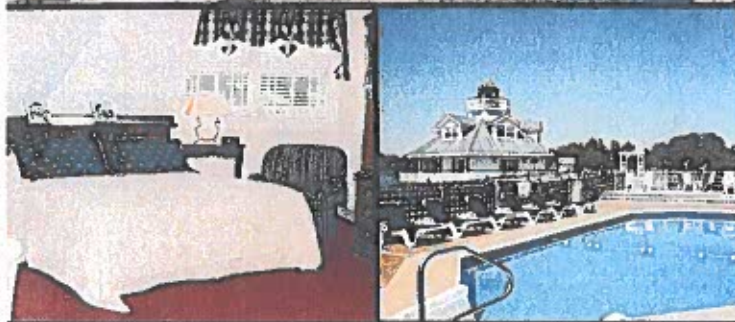
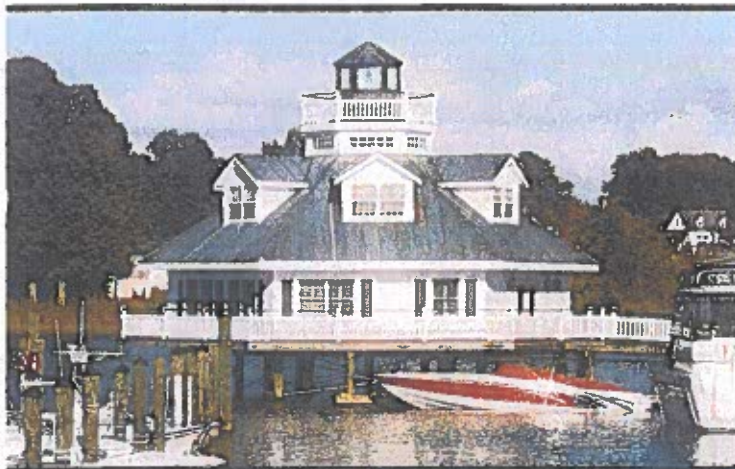
room, a wraparound porch, a large kitchenette, a king sized Murphy bed, gaming tables, living area, gas fireplace and beautiful bathroom with a huge tiled in shower.

ON-SITE AMENITIES INCLUDE

- Expanded continental breakfast included
- On-site award-winning restaurant
- Outdoor seasonal pool
- Boardwalk shopping
- 100 slip marina
- Business center
- Fitness center
- Free parking



THE LIGHT AT SMITHFIELD STATION



AN EXPERIENCE LIKE NO OTHER

The Light at Smithfield Station has quickly become the icon of not only Smithfield Station, but the town of Smithfield as well. Modeled after the light at Hooper's Straight on Maryland's upper Chesapeake Bay, The Light at Smithfield Station is a beautiful and authentic reproduction.

Built in 1994, many permits had to be obtained and the concept was reviewed by 32 separate state and federal agencies before finally being approved! During construction, owner Ron Pack would often visit the Hooper's Straight Light (now located at the Chesapeake Bay Maritime Museum in St. Michaels, MD) to take measurements and pictures that ensured an authentic light in Smithfield.

(757) 357-7700 | www.SmithfieldStation.com

Hampton Inn
& Suites
Smithfield, VA

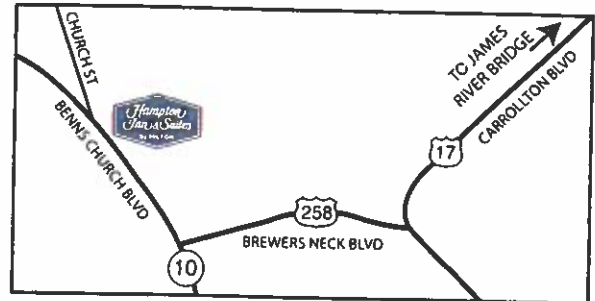


Hampton Inn & Suites SMITHFIELD, VA

200 Vincents Crossing, Smithfield, VA 23430

Tel: 757.365.4760

smithfieldsuitesva.hamptoninn.com



DIRECTIONS:

From Norfolk Airport (ORF):

Take I-64 W to Hampton/Richmond. Follow US 258 via Exit 263A to James River Bridge. Right on Brewer's Neck/VA 32 S. Right on Benn's Church. Hotel is 1.5 on right.

From Newport News Airport (PHF):

Left on Jefferson Avenue (VA143 E). Right on Mercury Blvd. Follow James River Bridge 7.5 miles. Right on Brewer's Neck/VA 32 S. Right on Benn's Church. Hotel is 1.5 on right.

AT HAMPTON INN & SUITES, YOU'LL ENJOY:

- Complimentary on the house hot breakfast daily
- Complimentary high speed internet
- Heated indoor pool
- Free local calls and voicemail
- Free In-room movie channels to be enjoyed on 32" high definition flat panel TV's
- On-site exercise room
- On-site coin operated laundry
- On-site convenience store available
- In-room hair dryer and coffee maker
- Standard guest rooms and suite rooms available
- Microwave and Refrigerator in every room
- Complimentary USA Today Newspaper (M-F)
- Hilton HHonors Points with every eligible stay
- Meeting Space available

The Hilton Family



we love
having you here.®

Smithfield Inn

Serving up Southern Hospitality since 1752.

Smithfield

ISLE OF WIGHT, VA



Combining the old world charm of an inn built in 1752, with contemporary casual elegance, the iconic Smithfield

Inn has been a favorite among visitors for over 260 years... and yes,

George Washington really did sleep here! The Inn offers a variety of choices for guests - fine cuisine in the Dining Room, a more casual vibe in the William Rand Tavern, and dining al fresco in the gorgeous Garden Gazebo (open almost year-round with space heaters used in the colder months!).



VisitSmithfieldIsleOfWight.com

Visitor Center: 319 Main Street, Smithfield, VA 23430
(800) 365-9339, (757) 357-5182



SMITHFIELD INN

Serving up Southern Hospitality since 1752.

Whether its lunch or dinner, the Smithfield Inn's most popular regional dishes are Chef Jonathon Olinger's She-Crab soup, Chesapeake Bay crab cakes, and of course - lots of scrumptious pork dishes...after we all we are in Smithfield! Mozell Brown's famous ham rolls were featured in the Guinness Book of Worlds Records in 2003. Mozell has been with the Inn for 50 years and is still making her famous rolls hot and fresh every morning.

The Inn caters meetings, weddings and receptions (up to 60 people for a cocktail reception or 40 for a sit-down dinner). Many are held under the tent in the Garden Gazebo. The Smithfield Inn is also a charming bed and breakfast offering five suites and four rooms and a full breakfast with your stay.



SmithfieldInn.com

112 Main Street, (757) 357-1752

Open Monday - Saturday, 11:30 a.m. - 9:00 p.m.

Sunday brunch: 11:30 a.m. - 3:00 p.m.



smithfield
& isle of wight

hams, history, hospitality & heart

Mansion House Art & Antiques

Smithfield

ISLE OF WIGHT, VA



*Fine Art & Elegant
Antiques at
Smalltown Prices*

- Oil Painting Restoration
- Original Oil Paintings (1820-1950)
- Estate Jewellery
- Porcelain (e.g. Limoges, Royal Doulton & Hummel)
- Sterling Flatware with matching service
- Cut Glass and much more...



120 N. Church St. Smithfield, VA 23430
Just around the corner from Main Street
(757) 357-3968, mansiongallery@charter.net

MansionHouseArtAndAntiques.com

Open Thursday, Friday & Saturday 10 a.m. - 5 p.m.
Sunday 1:00 - 5:00 p.m. and by appointment



VisitSmithfieldIsleOfWight.com

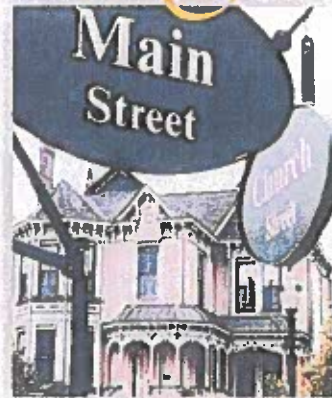
Visitor Center: 319 Main Street, Smithfield, VA 23430
(800) 365-9339, (757) 357-5182

Mansion on Main

Family & Business Friendly Accommodations

Smithfield

ISLE OF WIGHT, VA



*Bed & Breakfast • Business Lodging
Retreats • Vacation House Rentals
Meetings • Receptions • Weddings*



- three private rooms with private baths
- free wireless Internet and cable TV
- central heating and air conditioning
- parlors, dining room, and sun porch

36 Main St. Smithfield, VA 23430, (757) 357-0006
Mansion-On-Main.com mansion-on-main@charter.net



VisitSmithfieldIsleOfWight.com

Visitor Center: 319 Main Street, Smithfield, VA 23430
(800) 365-9339, (757) 357-5182